



Programming Options

For the EM35x Platform

The Ember EM35x series chips are delivered to customers with only a minimal amount of chip identification data programmed into their embedded flash contents. Before these chips can be used in a ZigBee network, the application and stack software and customer tokens must be programmed into the embedded flash.

This application note describes the various programming options available to Ember's EM35x series customers. The EM35x InSight Adapter (ISA3) can be used for the development, prototype, and both low-volume and high-volume production environments. Other options for the high-volume production environment include gang programmers, in-system programmers (ISPs), and in-circuit test (ICT) programmers.

New in This Revision

Clarified ISA3 usage in high-volume production environment.

Contents

General Programming Notes	2
Developer Environment Programming	2
Prototype and Low Volume Production Programming	4
High Volume Production Programming.....	5
Partner Gang Programmer Offerings	5
Partner In-System Programmer (ISP) Offerings	7
Partner In-Circuit Test (ICT) Programming Offerings	9



General Programming Notes

Even though the EM35x series embedded flash is fully tested during production test, the flash contents are not set to a known state before shipment. Therefore, the flash contents should be erased before programming an application. During manufacturing test, Ember recommends erasing the flash contents before test or retest of a device under test (DUT) to ensure that any previously stored calibration data is erased and proper channel calibration is executed before testing the device.

Developer Environment Programming

The EM35x InSight Adapter (ISA3) is included as part of Ember's EM35x Development Kit to allow for debugging and programming of Ember's EM35x series devices during the development stage. Figure 1 shows an image of the ISA3 connected to an Ember module.

Figure 1. ISA3 Connected to Ember Module



The ISA3 interfaces to either the InSight Desktop PC tool or command line executable utilities to program Ember's devices. A snapshot of InSight Desktop is shown in Figure 2, while Figure 3 shows a snapshot of the em3xx_load command line utility.

Figure 2. InSight Desktop Screen Capture

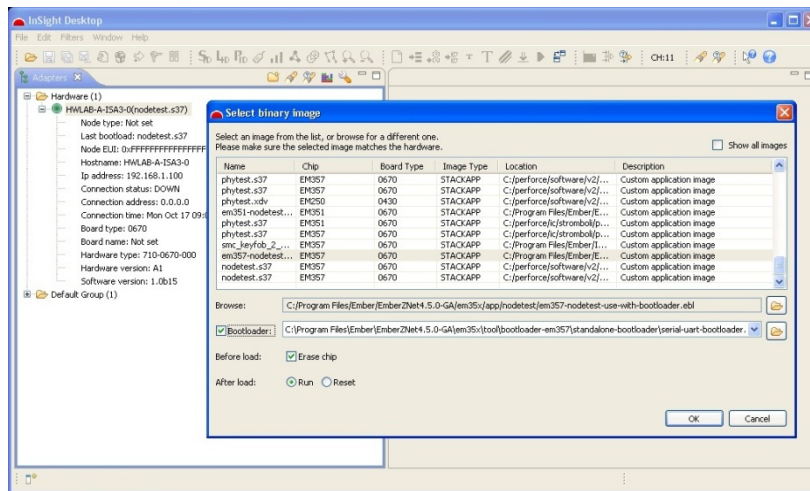


Figure 3. Command Line Utility Screen Capture

```

C:\Program Files (x86)\Ember\ISA3 Utilities\bin>em3xx_isa --ip 192.168.215.50
em3xx_isa version 1.0.9
DLL version 1.1.14, compiled Jan 13 2011 15:08:00
Connecting to IP address 192.168.215.50
HW-SAT-00 192.168.215.50 255.255.240.0 192.168.208.1
STATIC 192.168.215.50 255.255.240.0 192.168.208.1
000 0-n-0 115200 8-n-1 115200 8-n-1 000 0-n-0
v. 1.0b15 710-0670-000 Jun 21 2011 10:20:00 A3
Serial# 06701113 0133 03 A3. MAC Address 00:0D:6F:00:1C:1B
Node type EM357, EUI 0x0021ED0000071BC4, BoardName ETRX357HR-LR

C:\Program Files (x86)\Ember\ISA3 Utilities\bin>em3xx_load --ip 192.168.215.50 e
m357-nodetest-with-bootloader.hex
em3xx_load version 2.0b15.1294757405
Connecting to ISA via IP address 192.168.215.50
DLL version 1.1.14, compiled Jan 13 2011 15:08:00
SerialWire interface selected
SWCLK speed is 500kHz
Targeting EM357
Parse .hex format for flash
Reset Chip
Install RAM image
Verify RAM image
Install Flash image
Verify Flash image
Mark application image valid
Verifying bootloader and application
Run (by toggling nRESET)
DONE
C:\Program Files (x86)\Ember\ISA3 Utilities\bin>

```

The typical programming time when using the ISA3 to program an entire EM357 flash image and manufacturing tokens is 10 seconds.

For more information on the ISA3, refer to Ember Document 120-2010-000, *InSight Adapter (ISA3) Technical Specification*. For more information on InSight Desktop, refer to Ember Document 120-4005-000, *InSight Desktop User's Guide*. For more information on the command line tools, refer to Ember document 120-4032-000, *EM3xx Utilities Guide*.

Prototype and Low Volume Production Programming

The ISA3 also can be used for programming Ember's EM35x series devices during prototype and low-volume production stages. In a low-volume production environment multiple ISA3s can be used in parallel to program multiple devices at the same time, either using USB or Ethernet.

Connected by USB, up to 4 ISA3s can be addressed on a given PC to program EM35x series ICs at the same time. Follow these steps to change the USB address of an ISA3 from its default address of 0:

1. Disconnect all cables from ISA3.
2. Connect the USB cable from PC to ISA3.
3. Install ISA3 Utilities version 1.2 build 4 or later. Earlier versions do not support the `usbaddr admin` command.
4. Open a Windows Command Prompt.
5. Enter the command `em3xx_isa --admin "usbaddr set x"`, where x is the desired USB address for this ISA3.
6. Unplug the USB cable from the ISA3. This is necessary to power cycle the device so the PC re-establishes its USB connection on power-up.
7. Connect the USB cable from PC to ISA3.
8. Enter the command `em3xx_isa --usb x --admin "usbaddr read"`, where x is the USB address set in step 4 above. You should see a response similar to that in Figure 4 below.

Figure 4. EM3xx Utility USB Address Change Screen Capture

```

C:\Program Files (x86)\Ember\ISA3 Utilities\bin>em3xx_isa
em3xx_isa version 1.0.9
DLL version 1.1.21, compiled Oct 24 2011 16:19:00

HW-SAT-00 192.168.215.50 255.255.240.0 192.168.208.1
STATIC 192.168.215.50 255.255.240.0 192.168.208.1
000 0-n-0 115200 8-n-1 115200 8-n-1 000 0-n-0
v. 1.0b17 710-0670-000 Oct 24 2011 16:18:00 A3
Serial# 06701113 0133 03 A3, MAC Address 00:0D:6F:00:1C:1B
NodeType NotSet, EUI 0xFFFFFFFFFFFFFFFF, BoardName NotSet

C:\Program Files (x86)\Ember\ISA3 Utilities\bin>em3xx_isa --admin "usbaddr set 3"
em3xx_isa version 1.0.9
DLL version 1.1.21, compiled Oct 24 2011 16:19:00

Success: USB Address: 3 (after reboot, currently it is 0)

C:\Program Files (x86)\Ember\ISA3 Utilities\bin>em3xx_isa --usb 3 --admin "usbaddr read"
em3xx_isa version 1.0.9
DLL version 1.1.21, compiled Oct 24 2011 16:19:00

Connecting to USB address 3
USB Address: 3

C:\Program Files (x86)\Ember\ISA3 Utilities\bin>

```

At this point, this ISA3 is now addressable with the `--usb` option of the EM3xx command line utility. Simply use this option to address this ISA3.

The ISA3 can also be used in parallel in an Ethernet configuration. Each ISA3 is addressable with the `--ip` option of the EM3xx command line utility. Ember has tested 16 ISA3s in parallel and this testing has shown no increased programming times on a per-unit basis when compared to standalone programming times.

High Volume Production Programming

The ISA3 also can be used for programming Ember's EM35x series devices during high-volume production stages. In a high-volume production environment multiple ISA3s can be used in parallel to program multiple devices at the same time, either using USB or Ethernet. Please refer to the 'Prototype and Low Volume Production Programming' section for more details.

In addition, Ember has worked with programming partners to provide gang programming, in-system programming (ISP), and in-circuit test (ICT) programming solutions to customers in high-volume production. The gang programmers allow for EM35x series ICs to be programmed before placement onto boards, while the ISP and ICT programming options allow for integrated programming of the EM35x series ICs on an assembled printed circuit board (PCB) within a test set-up.

Note: Gang programmers do not support certificate programming for Smart Energy (SE) ZigBee Application Profile at this time. Please contact Ember or the programming solutions provider for more information.

Partner Gang Programmer Offerings

Ember has partnered with BPM Microsystems, Data I/O, and System General to provide gang programming options to Ember's EM35x series customers. Each partner offers different options for programming, as discussed in the following sections.

BPM Microsystems

BPM Microsystems offers gang programming options for the EM35x on all of their engineering, manual production, and automated programmers. Table 1 shows an excerpt from www.bpmicro.com when searching for EM357 support information (as of October 4, 2011). This outlines socket modules and programmers supported for the EM35x series IC.

Table 1. BPM Microsystems Device Information for EM357

Device Parameter	Value
Manufacturer:	Ember (ID=69Ah)
Part Number:	EM357 (ID=962Bh)
Code Revision:	1.0
8-bit Bytes:	134483968
Memory Regions:	134,217,728-134,414,335; 134,481,920-134,483,967
Vcc (program):	3.3
Electrical Erase:	Yes
Packages:	QFN(48)
Socket Modules:	LAP:[FX4ASMR48QFNXC, FX4SMR48QFNXC, ASMR48QFNXC, SMR48QFNXC]
Supported by:	BP-1600 BP-1610 BP-1700 BP-1710 BP-2600 BP-2610 BP-2700M BP-2700 BP-2710M BP-2710 BP-2800

Figure 5, Figure 6, and Figure 7 illustrate examples of BPM Microsystems programmers.

Figure 5. BPM Microsystems 4710 Multi-Site Automated Programmer



Figure 6. BPM Microsystems 4710 Programmer (44 device support)



Figure 7. BPM Microsystems 1710 Manual Programmer



For programming EM357s, the typical time to program 192 kB (Continuity Test, ID Check, Program, and Verify) is 35 seconds, with up to 4 devices in parallel on each socket module. The number of devices that can be programmed at once depends on the number of sites supported by the programmer. BPM Microsystems programmers have between 1 and 11 sites. Therefore, a 1-site programmer will program 4 EM35x ICs per operation, while an 11-site programmer will program 44 EM35x ICs per operation.

Using the 4710 line of programmers, for example, throughput capacity is as high as 1250 to 1350 EM35x devices per hour.

For more information on these programmers and support for the EM35x series devices, please see BPM Microsystems' web site at www.bpmicro.com, or contact Technical Support by phone at 1-800-225-2102 (US only) or 713-688-4600, or by email at tech@bpmicro.com.

Data I/O

Data I/O plans to offer gang programming support for the EM35x series IC. No further information is available at this time.

For more information on EM35x series support, please see Data I/O's support page (<http://www.dataio.com/Support/DeviceSupport/DeviceSupportSearchorig.aspx>) or contact Data I/O technical support using the web form at <http://dataio.com/ContactUs/TechnicalSupport.aspx>.

System General (SGC)

System General plans to offer gang programming support for the EM35x series IC. No further information is available at this time.

For more information on EM35x series support, please see System General's support page (http://www.sg.com.tw/instruGP/support_E.asp).

Partner In-System Programmer (ISP) Offerings

Ember has partnered with Algocraft and SMH Technologies to provide in-system programming (ISP) options. ISP differs from gang programming in that ISP is done when the EM35x series IC is already installed on an assembled board. Each partner offers different options for programming, as discussed in the following sections.

Algocraft

Algocraft provides support for the EM35x series IC on all of their WriteNow! Series single and parallel in-system programmers. Four models are available: WN-PRG01A (programs 1 device at a time), WN-PRG02A (programs 2 devices in parallel), WN-PRG04A (programs 4 devices in parallel), and WN-PRG08A (programs 8 devices in parallel). Figure 8 and Figure 9 illustrate examples of these programmers.

Figure 8. AlgocraftWriteNow! Series ISP Options



Figure 9. AlgocraftWriteNow! Series Programmer (WN-PRG08A)



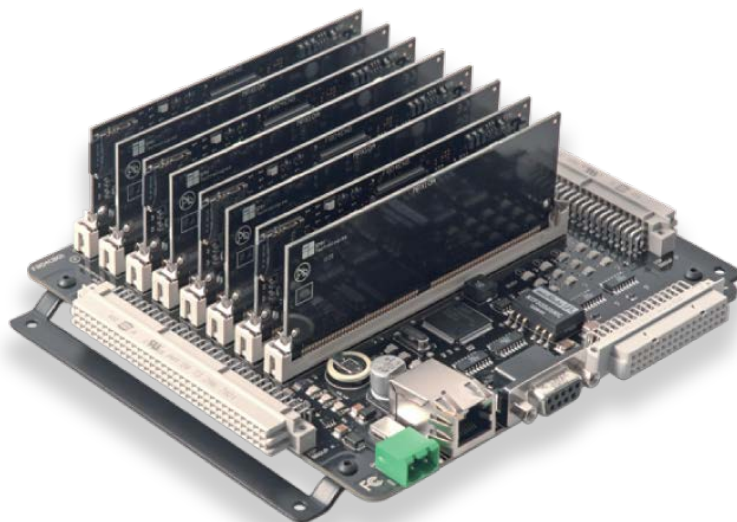
For programming EM351 devices, the typical time is 8.5 seconds, with up to 8 devices in parallel using the WN-PRG08A programmer. For programming EM357 devices, the typical time is 12 seconds. With an optional demultiplexer module (WN-DM series), Algocraft can program up to 32 devices at once.

For more information on these programmers and support for the EM35x series devices, please see Algocraft's web site at www.algocraft.com, or email Algocraft's technical support at support@algocraft.com.

SMH Technologies

SMH Technologies offers ISP support for the EM35x series IC on their FlashRunner Series Programmers. The Quattro Series offers three models: FR04A04 (4 true parallel ISP channels, no demultiplexing), FR04A08 (8 ISP channels on 4 parallel channels, each demultiplexable to 2 channels), and FR04A16 (16 ISP channels on 4 parallel channels, each demultiplexable to 4 channels). Figure 10 illustrates an example of this programmer.

Figure 10. SMH Technologies FR04 FlashRunner Quattro Series Programmer



Using the FR04A04, 4 EM351 devices can be programmed (Erase, Blank Check, Program, and Verify for 128k) in 53 seconds. For a single EM351, a breakdown of various programming sequences is as follows:

- 12.32 seconds for erase, program, verify readout
- 8.73 seconds for erase, program, verify checksum
- 6.17 seconds for program only

For more information on support for the EM35x series devices, please see SMH Technologies' web site at www.smh-tech.com, or contact SMH Technologies technical support at support@smh-tech.com.

Partner In-Circuit Test (ICT) Programming Offerings

Ember has partnered with Aeroflex and I-Test to provide in-circuit test (ICT) programming options. ICT programming is similar to ISP programming in that the EM35x series IC is already installed on an assembled board. ICT typically includes unpowered tests of passive components, as well as powered tests for digital circuits and voltage nets. Programming is typically done at the end of an ICT routine.

Aeroflex

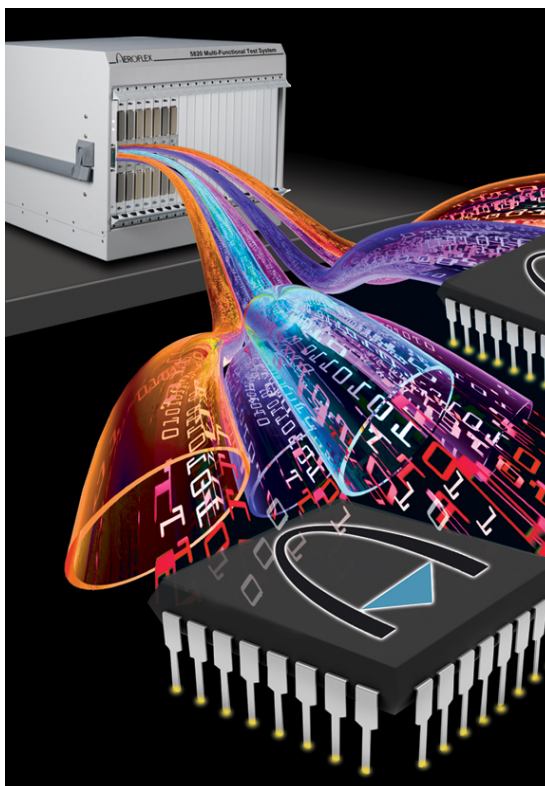
Aeroflex offers ISP options for the EM35x on their AX520 and 5800 Series Testers, which include parallel programming capabilities. More information on these programmers can be found at the following URLs:

http://www.aeroflex.com/ats/products/category/Semiconductor_Test.html

http://www.aeroflex.com/ats/products/category/ATE/Test_Systems/Analog_In-Circuit/5800_Series.html

Figure 11 illustrates an example of the 5800 Series tester.

Figure 11. Aeroflex 5800 Series Tester



Using the 5800 Series tester, for example, a panel of 20-40 boards with EM35x devices can be programmed in less than a minute.

For more information on these programmers and support for the EM35x series devices, please see Aeroflex's web site at www.aeroflex.com, or contact Aeroflex technical support at support@eroflex.com.

I-Test

I-Test plans to offer ICT programming support for the EM35x series IC. No further information is available at this time.

For more information on support for the EM35x series devices, please see I-Test's web site at www.i-test.ca, or contact I-Test technical support at support@i-test.ca.

After reading this document

If you have questions or require assistance with the procedures described in this document, contact Ember Customer Support at http://www.ember.com/support_index.html.

Copyright © 2011-2012 Ember Corporation.

All rights reserved. Neither this publication nor any part thereof can be copied, photocopied, reproduced, translated, or converted to any electronic or machine-readable form in whole or in part without prior written approval of Ember Corporation. This documentation is furnished under license and can be used or copied only in accordance with the terms of such license.

The content of this documentation is furnished for informational use only, is subject to change without notice, and does not represent a commitment or guaranty by Ember Corporation. The statements, configurations, technical data, and recommendations in this document are believed to be accurate and reliable as of the time of publication, but Ember Corporation assumes no responsibility or liability for any errors or inaccuracies that may appear in this documentation. DOCUMENTATION IS PROVIDED "AS IS" AND ALL EXPRESS OR IMPLIED CONDITIONS, REPRESENTATIONS AND WARRANTIES, INCLUDING ANY IMPLIED WARRANTY OF MERCHANTABILITY, FITNESS FOR A PARTICULAR PURPOSE OR NONINFRINGEMENT, ARE DISCLAIMED. Users are responsible for their applications and for the use of any products specified in this document.

Title, ownership, and all rights in copyrights, patents, trademarks, and other intellectual property rights embodied in Ember Corporation's Products and any copy, portion, or modification thereof, shall not transfer to Purchaser or its customers and shall remain in Ember Corporation and its licensors.

No source code rights are granted to Purchaser or its customers with respect to any Ember software. Purchaser agrees not to copy, modify, alter, translate, decompile, disassemble, or reverse engineer Ember hardware (including without limitation any embedded software) or attempt to disable any security devices or codes incorporated in Ember hardware. Purchaser shall not alter, remove, or obscure any printed or displayed legal notices contained on or in Ember hardware.

Ember is a trademark of Ember Corporation. All other trademarks are the property of their respective holders.

